

MATCH MW 8BMW-D

8" / 200 mm subwoofers

MATCH
BY AUDIOTEC FISCHER



Also well suited for
universal use

Features

- 8" subwoofers with very low mounting depth for shallow subwoofer designs and under-seat installation in BMW vehicles
- Allows to use extremely compact, sealed enclosures
- Oversized 42.5 mm / 1.7" voice coil for high power handling
- 2 x 2 Ohms impedance per woofer for most flexible connection options
- Plug & Play connectors for original BMW cable harness are included in delivery
- Fit directly into the original mounting positions under the front seats of all BMW model ranges with under-seat subwoofers

Major selling points

- Very low mounting depth
- Very high output power
- Most flexible connection options thanks to 2 x 2 Ohms impedance per woofer
- Suitable for all BMW model ranges with under-seat subwoofers and universal use

GERMAN CAR HIFI

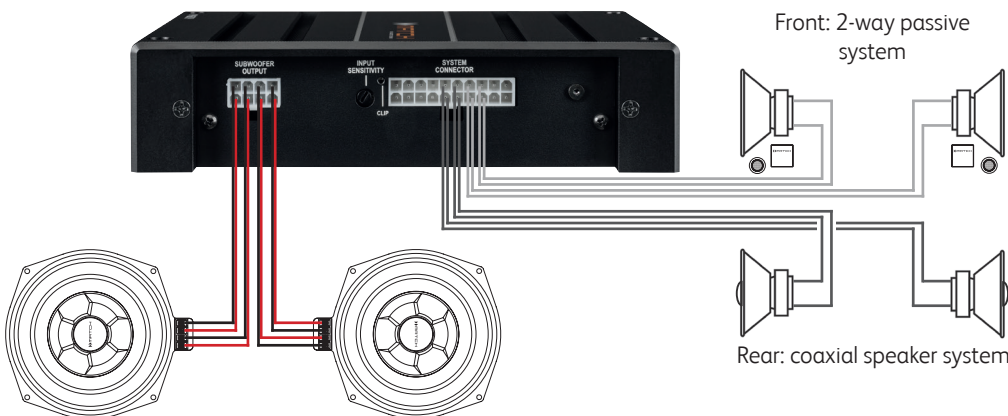


Switch it parallel

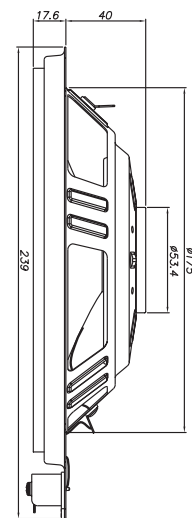
The speaker connector with its gold-plated screw terminals allows two different configurations. If the metal bracket is mounted the woofer has an impedance of 1 x 4 Ohms. Without the metal bracket each voice coil can be driven separately (impedance in this case 2 x 2 Ohms) which guarantees a perfect interaction with MATCH Plug & Play amplifiers.

Application example with MATCH PP 62DSP / PP 82DSP

Dimensions



Each subwoofer will be driven with two channels of the Plug & Play amplifier.



Recommended enclosure

(when used as universal subwoofers)

Sealed box

Minimum possible net volume	3 L
Lower cut-off frequency (-3dB)	63 Hz
DSP settings	<ul style="list-style-type: none"> - Highpass: Butterworth; 12 dB/octave; crossover frequency 40 Hz - Additional EQ filter: center frequency 90 Hz; Q factor 3.0; gain -4 dB - Lowpass: Butterworth; 24 dB/octave; crossover frequency 80 - 100 Hz

	For one subwoofer	For two subwoofers
Ported box		
Vented net volume	12 L	24 L
Port diameter	6 cm	8 cm
Port area	28 cm ²	50 cm ²
Port length	25 cm	20 cm
Port tuning frequency	46 Hz	46 Hz
DSP settings	<ul style="list-style-type: none"> - Highpass: Self-Define; crossover frequency 40 Hz; Q factor 1.3 - Additional EQ filter: center frequency 67 Hz; Q factor 3.0; gain -3 dB - Lowpass: Butterworth; 24 dB/octave; crossover frequency 80 - 100 Hz 	

Technical Data

Power handling RMS / max.	200 / 400 Watts
Frequency response	25 - 140 Hz
Impedance (Z)	2 x 2 Ohms
DC resistance (Re)	3.4 Ohms
Voice coil diameter (Ø)	42.5 mm
Voice coil winding height	12.5 mm
Max. linear excursion (Xmax)	+/- 4.0 mm
Cone area (Sd)	214 cm ²
Moving mass (Mms)	44.2 g
Mechanical resistance (Rms)	0.74 kg/s
Resonance frequency (Fs)	46 Hz
Mechanical Q factor (Qms)	4.45
Electrical Q factor (Qes)	0.59
Total Q factor (Qts)	0.52
Compliance (Cms)	272 µm/N
Equivalent air volume (Vas)	17.3 L
Force factor (B*I)	8.6 Tm
Voice coil inductance (Le)	1.1 mH
Efficiency 1W / 1m (SPL)	90 dB
Compatibility	Suitable for all BMW model ranges with under-seat subwoofers and universal use